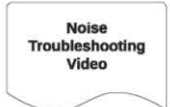
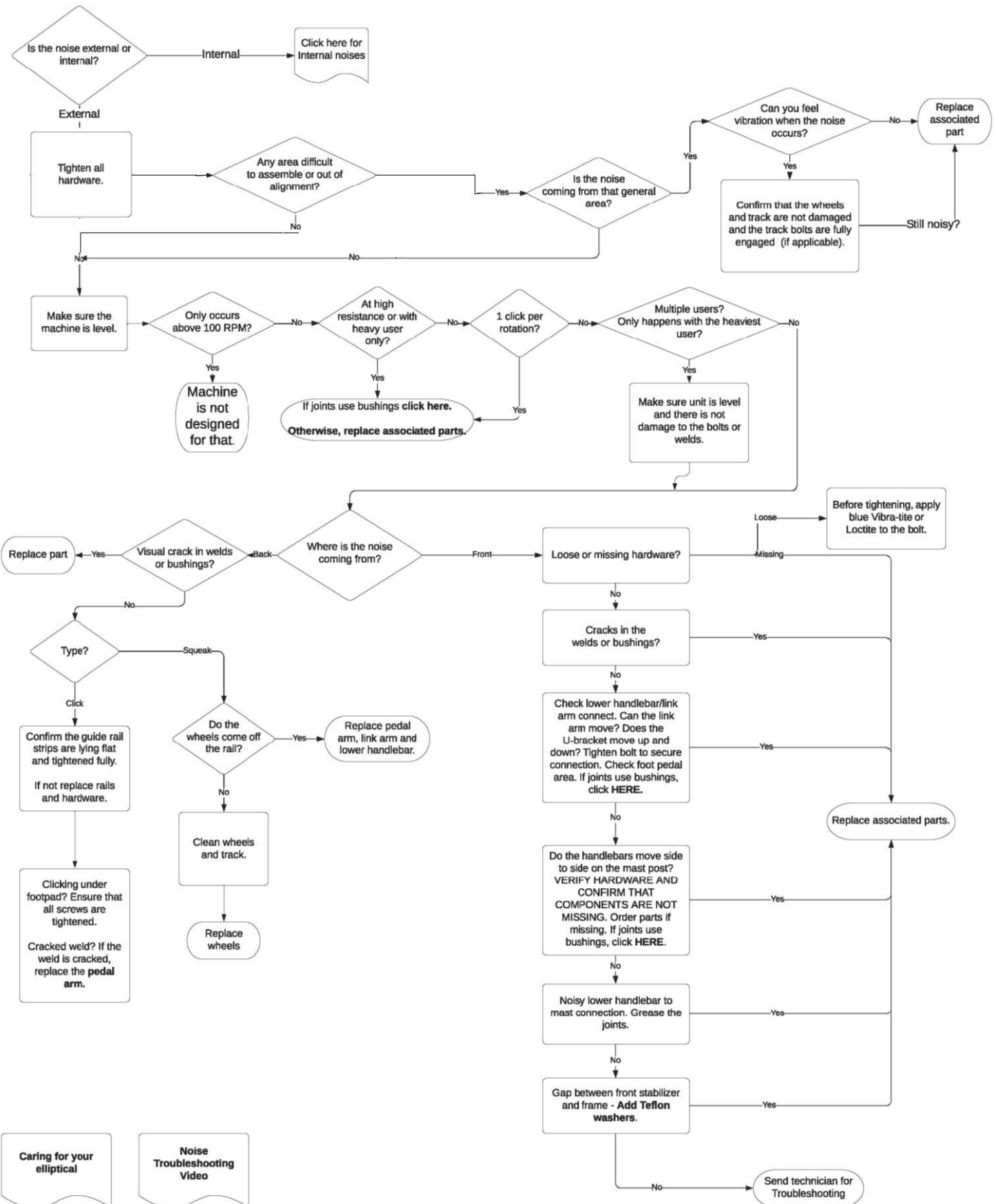
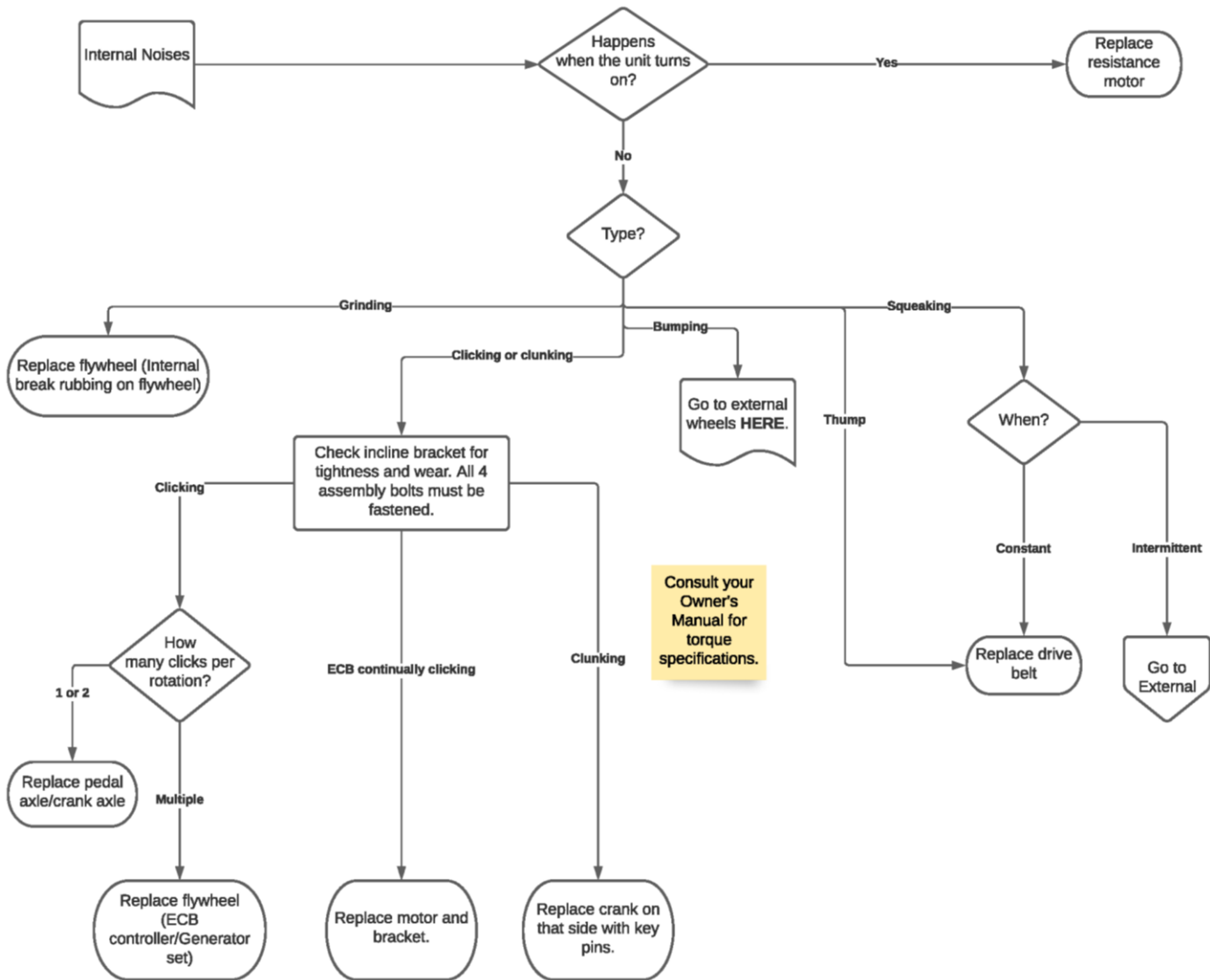


External Noises



Internal Noises



If joints use bushings (not bearings):

1. Check for side to side play in the joint of each moving part. If movement causes noise, tighten that joint.
2. If noise persists, refer to the exploded diagram and parts list for that particular model. If noise is coming from an area where a **wavy washer** and **flat washer** are together, install **two additional flat washers**. This fills the gap created by the wavy washer.

In the S7100-03 example below, install two of F09 (part # 005026-00) in the highlighted area.

F09 - 005026-00 - Washer;Flat;25.5x35.0x1.0T

F10 - 1000104329 - Washer;WW;26.0x34.0x0.5t;65Mn;

